

# Pressure Relief 3port Valve (SHVS)

## SHVS200~600 Series

- SHVS can prevent accidents caused by inadvertent air supply problems.



SHVS400



SHVS300

### How to order

SHVS 3 00- 03

① Pressure relief 3port valve

② Body Size

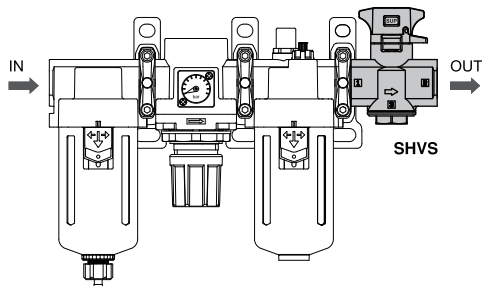
- 2 - 1/4
- 3 - 3/8
- 4 - 1/2
- 6 - 1

③ Thread type

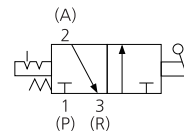
- Nil - Rc(PT)
- N - NPT
- G - G(PF)

④ Port Size

| Symbol | Size | Body size |   |   |   |
|--------|------|-----------|---|---|---|
|        |      | 2         | 3 | 4 | 6 |
| 02     | 1/4  | ●         |   |   |   |
| 03     | 3/8  |           | ● |   |   |
| 04     | 1/2  |           |   | ● |   |
| 06     | 3/4  |           |   |   | ● |
| 10     | 1    |           |   |   | ● |



### Symbol



### Specification

| Model                    | SHVS200               | SHVS300 | SHVS400 | SHVS600 |     |     |
|--------------------------|-----------------------|---------|---------|---------|-----|-----|
| Port size                | IN, OUT               | 1/4     | 3/8     | 1/2     | 3/4 | 1   |
|                          | EXH                   | 1/8     | 1/4     | 3/8     | 1/2 |     |
| Cv                       | IN→OUT                | 0.88    | 1.72    | 3.8     | 5.0 | 6.5 |
|                          | OUT→EXH               | 0.84    | 1.66    | 2.4     | 2.8 | 3.1 |
| Fluid                    | Compressed air        |         |         |         |     |     |
| Proof pressure           | 15bar (1.5MPa)        |         |         |         |     |     |
| Operating pressure range | 1~10bar (0.1~1MPa)    |         |         |         |     |     |
| Ambient and fluid temp.  | -5~60°C (No freezing) |         |         |         |     |     |
| Handle switching angle   | 90°                   |         |         |         |     |     |

### Precautions

- ① Do not supply air pressure from ports other than the 1 (P) port. The valve will malfunction when air pressure is supplied from other ports.
- ② Do not apply negative pressure. It may result in malfunction.
- ③ The valve must be switched to each position instantly and securely. Stopping the knob between the extreme positions may cause malfunction.
- ④ Do not remove the mounting screws from the bonnet. As this may cause malfunction.

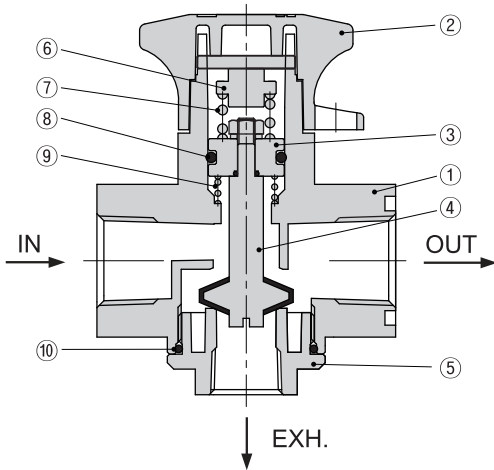
\* A spacer or spacer with bracket is required if the valve is combined with modular F.R.L. Please order it separately.

| Pressure relief 3port valve | Spacer part no. | Spacer with bracket part no. | Applicable air preparation equipment |
|-----------------------------|-----------------|------------------------------|--------------------------------------|
| SHVS200                     | B21S            | B21T                         | AU200                                |
| SHVS300                     | B31S            | B31T                         | AU300                                |
| SHVS400                     | B41S            | B41T                         | AU400-04                             |
| SHVS600                     | B61S            | B61T                         | AU600                                |

# Pressure Relief 3port Valve

## STRUCTURE / PARTS

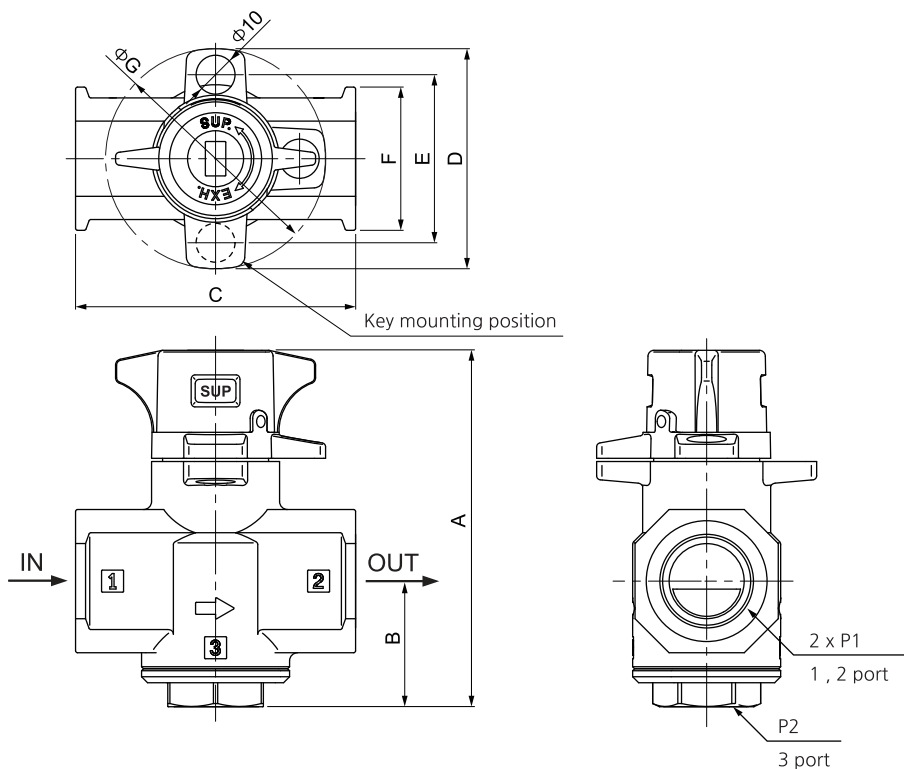
### SHVS 200~600



| No. | PARTS         | MATERIAL    |
|-----|---------------|-------------|
| ①   | Body          | ALDC        |
| ②   | Handle        | ALDC        |
| ③   | Piston        | Brass       |
| ④   | Spool         | Brass + NBR |
| ⑤   | Cover         | ALDC        |
| ⑥   | Spring guide  | SUM         |
| ⑦   | Spool spring  | SUS         |
| ⑧   | Piston o-ring | NBR         |
| ⑨   | Spring        | SUS         |
| ⑩   | Cover o-ring  | NBR         |

## DIMENSIONS (mm)

### SHVS 200~600



| Model    | P1     | P2  | A    | B    | C  | D  | E  | F    | G    |
|----------|--------|-----|------|------|----|----|----|------|------|
| SHVS 200 | 1/4    | 1/8 | 60   | 20   | 40 | 46 | 33 | 25   | 45.8 |
| SHVS 300 | 3/8    | 1/4 | 79.5 | 28.5 | 53 | 55 | 42 | 30   | 55   |
| SHVS 400 | 1/2    | 3/8 | 89   | 31.5 | 70 | 55 | 42 | 35.8 | 55   |
| SHVS 600 | 3/4, 1 | 1/2 | 119  | 39.8 | 90 | 68 | 54 | 52   | 67.5 |