

# Rotary Joint (SRJ)

## SRJ2000~6000 Series

- SRJ Series are easy to install because of its small size and light weight.
- SRJ Series have very low resistance against rotation.
- SRJ Series are complete no-lubrication type.



SRJ 3000A



SRJ 4000A



SRJ 6000W

### How to order

**SRJ 4 000 A - 04 R**

- ① Rotary Joint
- ② Body size
  - 2 - 1/4
  - 3 - 3/8
  - 4 - 1/2
  - 5 - 3/4
  - 6 - 1
- ③ Media Fluid
  - A - Air
  - W - Water
- ④ Port size
 

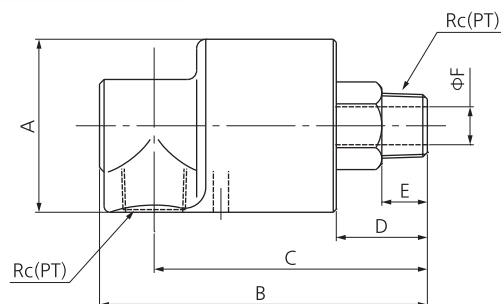
Symbol	Size	Body size					
		2	3	4	5	6	
01	1/8	●					
02	1/4	●					
03	3/8		●				
04	1/2			●			
06	3/4				●		
10	1					●	
- ⑤ Direction of connecting screw
  - R - Right
  - L - Left

### Symbol

Fluid	Air, Water	
Max. temperature	100°C	
Max. pressure	10bar (1MPa)	
Number of Max. rotation	for Air	800rpm
	for Water	500rpm

### Dimensions (mm)

#### SRJ 2000~6000



Model	Port size (PT)	A	B	C	D	E	F
SRJ2000-01	1 / 8	45	88.5	73	24	11	7
SRJ2000-02	1 / 4	45	88.5	73	24	11	7
SRJ3000-03	3 / 8	45	93	79	28	12	9
SRJ4000-04	1 / 2	57	108	91	30.5	15	12.5
SRJ5000-06	3 / 4	63	121	101	35	16	17
SRJ6000-10	1	74	138.5	115.5	42	18	21.5